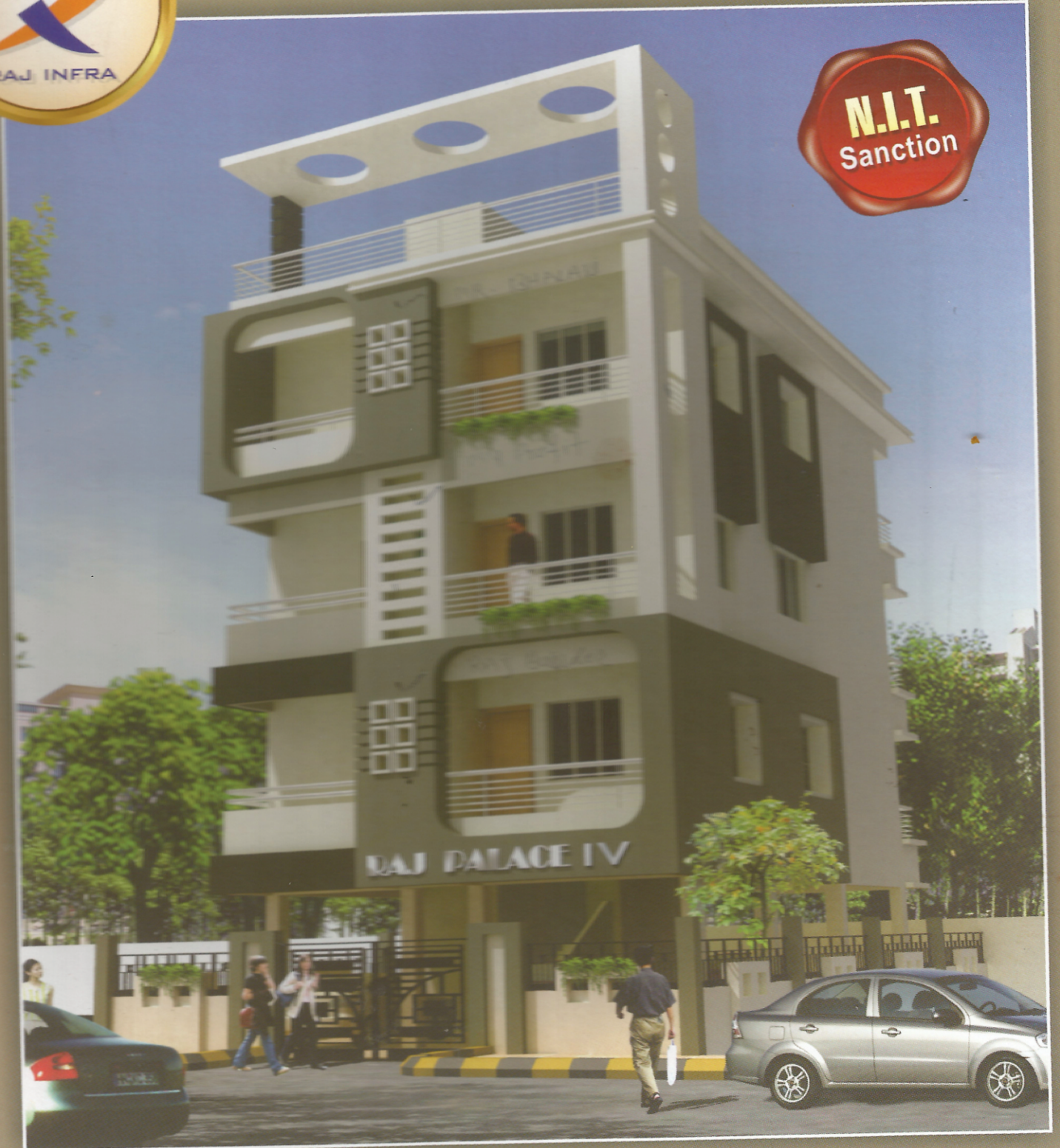




RAJ PALACE IV



Site : Plot No. 237, In front of Petrol Pump, Besa Square, Nagpur - 440034

Basu



Calendar + office

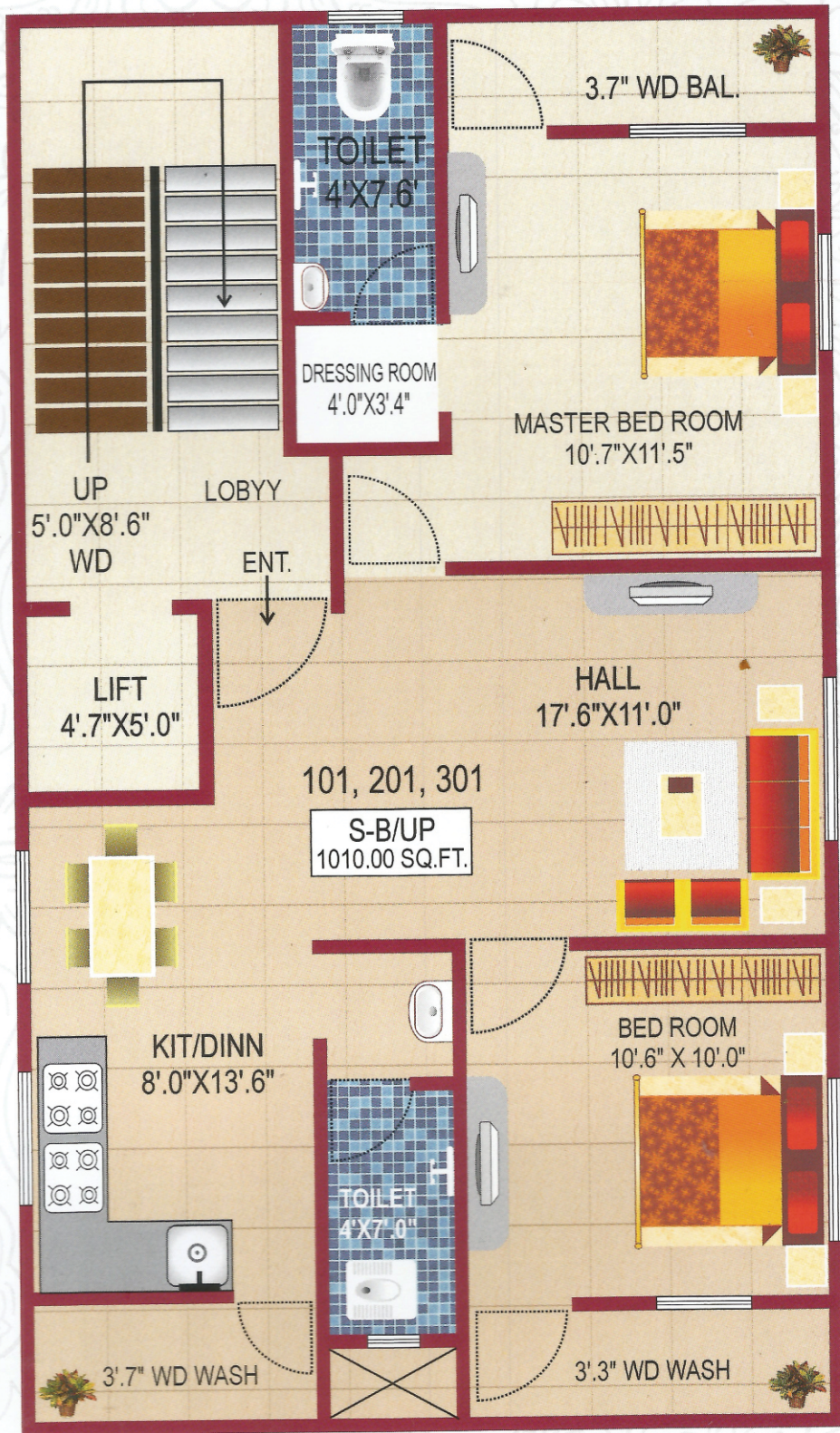


Highlights

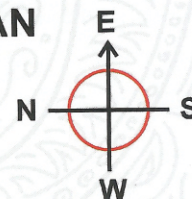
- In front of Petrol Pump Besa
- 200 mtr. from Besa Sq.
- 0.5 km. From Manish Nagar
- 1.5 km. From Omkar Nagar Sq.
- 5 km from Ajni Railway Station
- 5 km. From Main Bus Stop
- 5 km. From Air Port
- 8 km. From Zero Mile



Flat No.	Super Build up Area
101	1010 Sq. Ft.
201	1010 Sq. Ft.
301	1010 Sq. Ft.



FIRST, SECOND & THIRD FLOOR PLAN



Specifications

- Structure** : RCC Framed Structure
- Walls** : External 6" Brick Wall./ Internal 4 " Brick Wall.
- Painting** : External walls in water proof paints./ Internal walls (Putty) & Paint In Interior
- Flooring** : Vitrified Tiles in all Rooms.
- Doors** : Main door & Frame in Teak Wood. All Internal Frame in R.C.C. With Flush Doors.
- Windows** : Two Track Aluminium sliding window With M. S. Safety Grill.
- Kitchen** : Granite Top with stainless steel sink Glazed/ceramic Dado Tiles above Platform up to 2 ft Height
- Toilets** : Designer Glazed - Dado Tiles on the Walls. Standard Fittings in All Bathrooms.
Concealed Plumbing Fittings
- Electric** : Concealed Electrification, Ac Point in Hall & Master Bedroom.
- P.O.P.** : P.O.P. in Hall & Master Bed Room.
- LIFT** : Lift Facility Available.

- ▣ Extra Charges for M.S.E.B. Network Meter, Transformer & Registration.
- ▣ Extra Work Will be Done Against Extra Payment in Advance.
- ▣ Taxes (Service Tax, Sales Tax & Vat)/ Incidental Charges Will be Born By Purchaser As Applicable



RAJ INFRA REALITIES

Plot no. 1, Shop No. 1, Banait Complex, Besa Chowk, Besa, Nagpur - 440 034

Contact for Booking :
9767874853
9921583700